



THE ALL NEW 4 STROKE MFS8/9.8



THE NEXT GENERATION OF 8/9.8HP

The next generation of MFS8/9.8C(W) model lineup has been engineered to be EFI (Electronic Fuel Injection) for the first time in 200cc class.

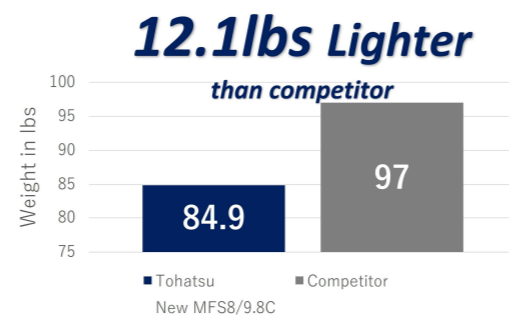
The battery-less EFI (Electronic Fuel Injection) model is the lightest 2-cylinder 8/9.8 hp on the market. In addition to upgrading this model to EFI (Electronic Fuel Injection), Tohatsu has applied various key features from all other portable outboards within the company's product range. The combination of best-selling features is sure to provide a smarter, more exciting boating experience.



Lightest 2-Cylinder 8/9.8 hp with EFI

MFS8/9.8C(W) is the lightest EFI in the industry within the 200cc displacement class. At a weight of 84.9lbs (38.5kg), it is lighter than the closest competitor EFI model*.

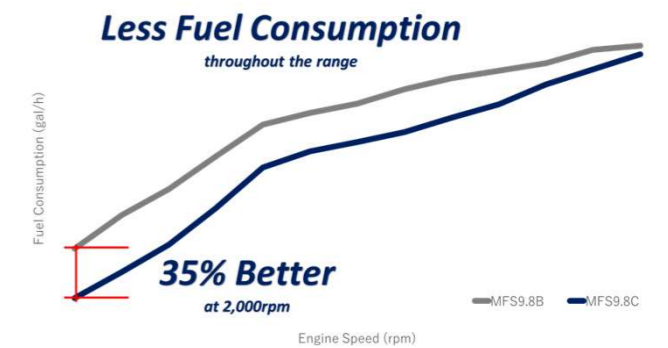
The EFI system will provide consistent starting, stability at idle and fuel efficiency. Additionally, the EFI system will eliminate the hassles experienced with carbureted models, such as clogging and overhaul of carburetor because of ethanol fuel related issues.



*Data provided is collected and calculated by Tohatsu Engineering Department. Competitor specification data is based on their website/brochure information as of December 2023.

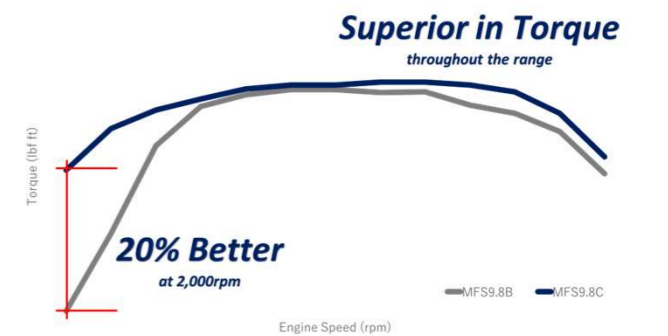
Improved Fuel Economy

MFS8/9.8C(W) achieved better fuel efficiency compared to the traditional carbureted model of MFS8/9.8B throughout the RPM range and managed to reduce fuel consumption by 35%.



Superior in Torque

MFS8/9.8C(W) achieved a superior torque performance on a lower end of RPM, which results in better acceleration. The new model achieved 20% better torque compared to previous model MFS8/9.8B.



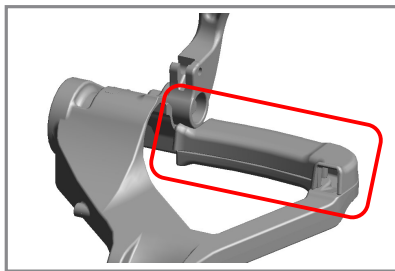
Innovative Portability

MFS8/9.8C(W) has been equipped with many valuable features from all other portable outboards within Tohatsu's product range.

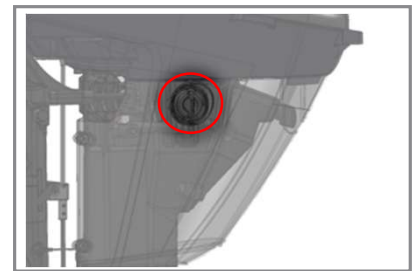
- Ergonomically designed tiller handle includes forward-neutral-reverse front shift lever, stop switch, throttle friction adjustment and optional power tilt switch for easier access and maneuverability.
- In addition to an overall cleaner look, the new carrying handle features a 40% increase in surface area and smooth shape to reduce pressure while transporting by hand.
- Similar to other Tohatsu models, flushing port has been relocated to the mid-section. Freshwater flushing is now easier than ever for better maintenance – no special tools required.



Tiller Handle



Carrying Handle Grip



Flushing Port

Specification

Specification / Model	MFS8C	MFS9.8C(W)
Engine Type	4-Stroke 2-Cylinder SOHC-4V	
Maximum Output kW (HP)	5.9 (8)	7.2 (9.8)
Operation Range (r/min)	5,300 – 6,200	
No. of Cylinders	2	
Displacement	12.7 cu.in. (209 cm ³)	
Bore x Stroke	2.15 x 1.75 in. (55 x 44 mm)	
Dry Weight**	S: 85 lbs. (38.5 kg) / L: 87 lbs. (39.5 kg)	
Shaft Length	S: 17.05 in. (433 mm) / L: 22.05 in. (560 mm)	
Gear Ratio	2.08 (27:13)	
Alternator Output	12V 84W 7A / @5,750 r/min	
Color Option	Aqua Marine Blue	Aqua Marine Blue & Beluga White

**Weight specification is based on the lightest version.



Check out our brand at
www.tohatsu.com and social medias

